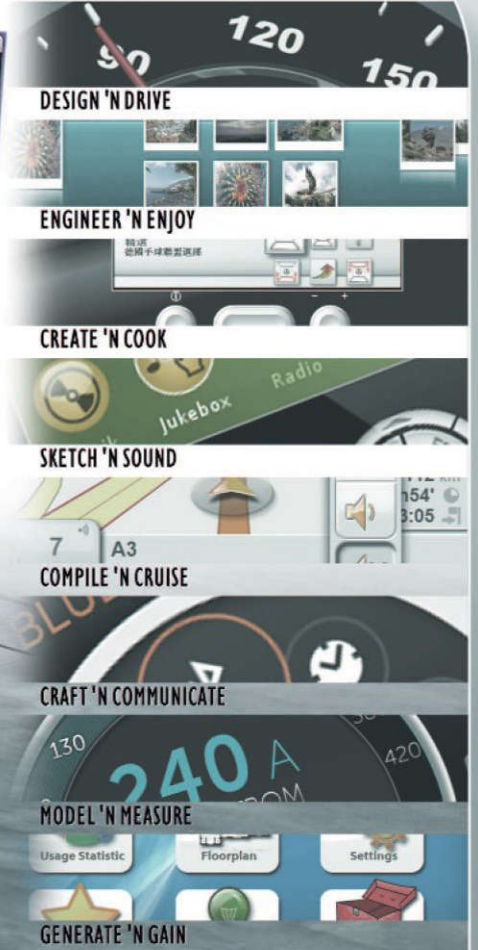


guiliani ^{SDK}

Embedded HMI Framework



> Guiliani – Embedded HMI Framework

Graphical User Interface – Light and Innovative with Animations

Create stunning graphical user interfaces for embedded systems within minutes!

Guiliani is the solution for Graphical User Interfaces on embedded systems. It combines the comfort of a PC based development tool-chain with the benefits of a highly-optimized software framework, specifically designed for the use on embedded hardware.

Features:

- Portability (from no-OS to any-OS, any μ C, 16 bit & higher)
- Designed for embedded applications (low memory and CPU consumption)
- Optimized redraw strategy to maximize the system performance
- Customizability (tailoring the framework to cover your needs)
- Support of all common font engines (Freetype, Cleartype, Bitmap fonts)
- Independent of Graphics API

- Alpha blending
- Sub-Pixel Accuracy
- Support of binary or XML-definitions for GUI appearance
- Extendable set of transition- and animation-effects
- Runtime language switching and Localization (UTF-16 & UTF-8)

Benefit from mature software that has been successfully used for years, in tens of thousands of devices already. Start evaluating Guiliani now!

> **In the market today, products differentiate more and more through their GUI, A GUI needs to provide a perfect representation of a company's corporate identity. Here, Guiliani can help.**

Your GUI is developed on a PC and then can be compiled to any target device, regardless of hardware and OS platforms.

Suppliers of ODM products can also benefit from Guiliani: Skinning and animation configuration can be achieved very quickly and easily at runtime via XML.

Guiliani offers an excellent total-cost-of-ownership by enabling an efficient development process combined with a flexible business model and competitive pricing.

Guiliani Streaming Editor (GSE)

Your HMI is only a few clicks away. With the Guiliani Streaming editor (HMI Editor) you can easily design and modify your HMI within a single tool. A huge list of standard widgets is already included (e.g. radio-buttons, sliders, input-fields etc.) and the list can be extended by your own corporate or customized widgets.

Reasons to use the HMI Editor

- Reduced time to market due to graphical HMI creation
- Design your HMI once with the GSE, simulate it on PC and deploy it to your target system without any modifications
- The PC simulation offers a life-like preview of the target HMI as the same code is used
- Change your Layout via mouse drag and drop
- Intuitive GSE workflow enables Engineers and Designers to create HMI solutions for the target system
- Extend the editor's functionality with customized widgets, commands and animations
- Reliable and robust tool chain
- The output files can be processed and modified with other applications
- Automatic text length checking (including multi-language support)

Photo Bridge

The Photo Bridge enables you to draw HMI items in your preferred environment and to use the output in Guiliani:

- *Convert Photoshop PSD Files into the Guiliani format*
- *Easily design your Buttons, Images or other GUI Objects in your preferred Photoshop environment*
- *Separate the art- and design-work (using Photoshop) and the GUI realization*

TES Electronic Solutions GmbH is your end-to-end solution provider for your perfect HMI. TES offers state-of-the-art HMI and Graphic Software Solutions and is pleased to support you in all stages of your application development.

Your representative contact:

TES Electronic Solutions GmbH

Knut Bretschneider
Business Development Manager
Intelligent HMI/Graphics Solutions
Hanauer Landstraße 328-330
D-60314 Frankfurt a.M.
Phone +49 (0) 911 8 10 20 12
knut.bretschneider@tes-dst.com