

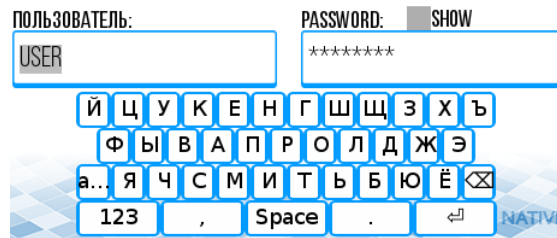
Guiliani 2.3 Release Notes

New platforms:

1. ST Microelectronics STM32F746
2. Renesas RZ/A2M

General Features:

3. Predefined Keyboard-Layouts (English, German, Russian, Arabic)



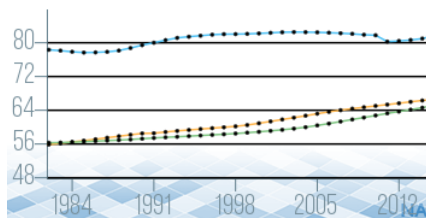
4. Support for BiDi-Textrendering



بإعطاء سلوك ديناميكي، من خلال الاستفاق الفئوي يمكن تنفيذ أنواع جديدة مخصصة من الإسقاطات .
يقدم جولياني مجموعة متنوعة من أنواع الإسقاطات المختلفة . والتي تسمح للتطبيق

New Controls:

5. Chart



6. Calendar



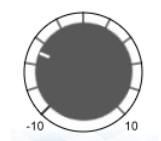
7. Clock



8. Circular-Slider



9. Knob



10. Segment-Bar



11. Range-Slider

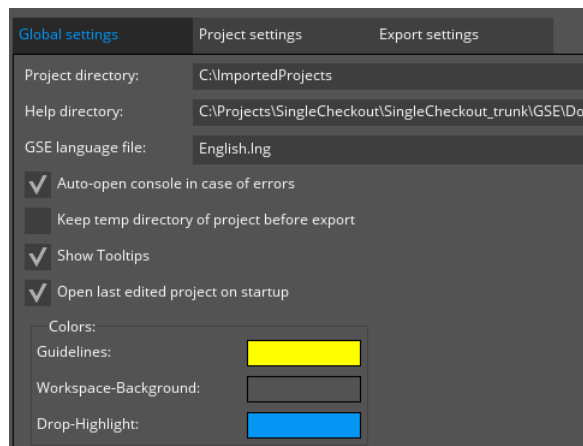


New Behaviours:

12. Auto-Repeat

Repeat actions with defined interval and multiple stages

13. TabSwitch



New Commands:

14. CallAPI

Previously CallApplicationAPICmd

15. Delay

Execute additional Commands after specified time

16. SetObjectVisuals

Manipulate Position/Size/Alpha of objects

17. StartAnimationChain

Start specified animation-chain

18. StopAnimationChain

Stop specified animation-chain

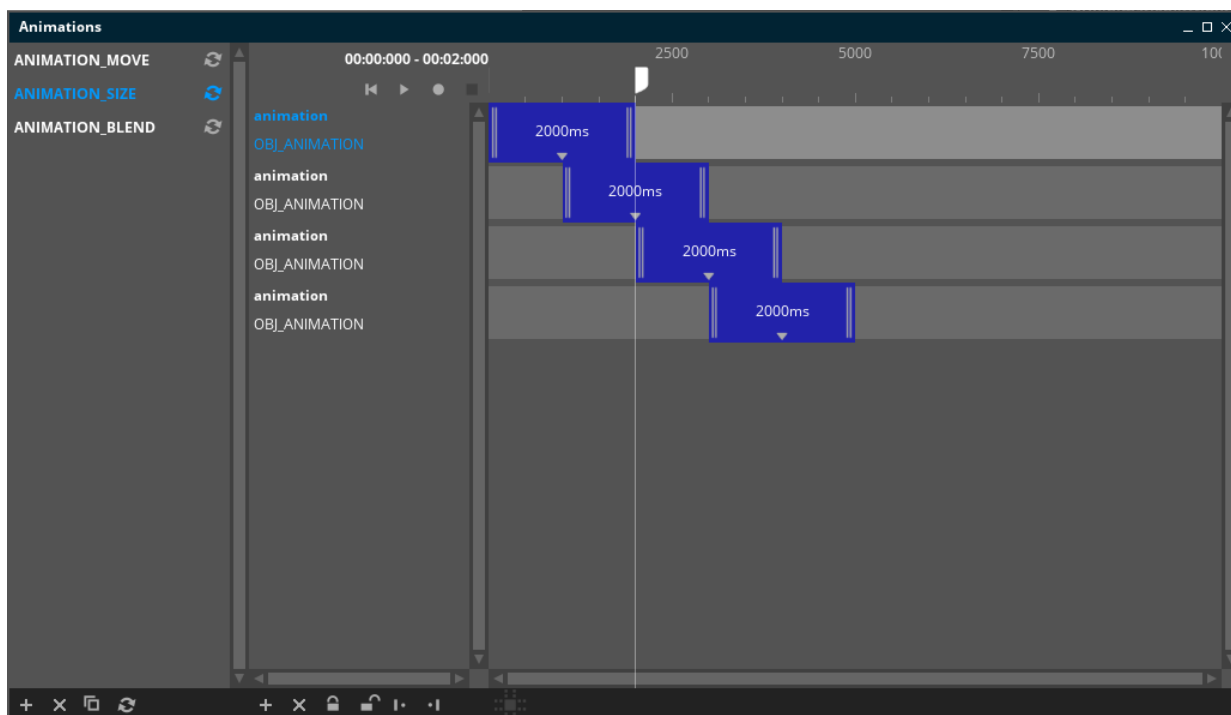
19. SwitchResourceSets

Switch resource-sets, e.g. Images, Fonts, etc.

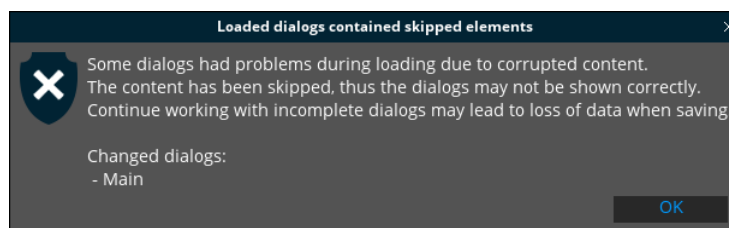
GSE:

20. New Animation-Editor

Easily create complex animations featuring real time-preview

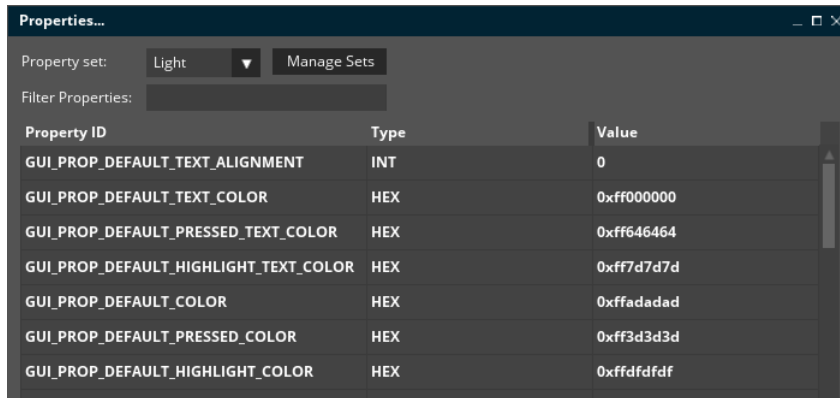


21. Skip corrupted data in dialogs on load



22. Properties can be used for Colors

Set colors of objects via properties which can be dynamically switched



23. Improved CustomExtensions-Management

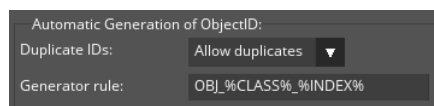
CustomExtensions are now easier to add or remove

24. Manage Resources including Filtering for filename

Additionally to ResourceID filenames are also searched for

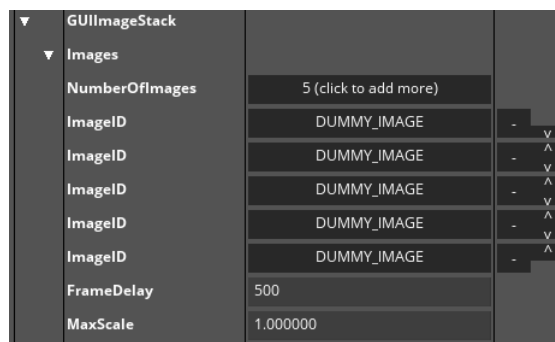
25. Generation of ObjectIDs now rulebased

Prevent duplicate object-ids by using auto-generation rules



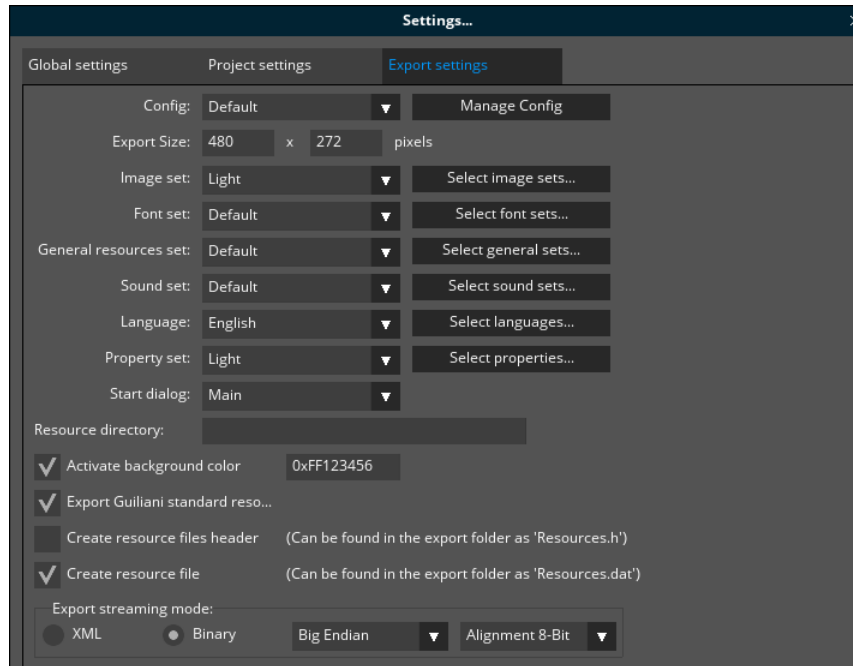
26. Reordering of repeating entries

Repeating entries (e.g. images for ImageStack) can easily be re-ordered



27. Manage multiple Export-Configuration per project

Specify different export-settings and group them into an Export-Configuration



28. Configuration of DataPool

Now initial values for both dimensions of a DataPool-object can be configured

