

## Guiliani 2.3 Release Notes

### New platforms:

1. ST Microelectronics STM32F746
2. Renesas RZ/A2M

### General Features:

3. Predefined Keyboard-Layouts (English, German, Russian, Arabic)

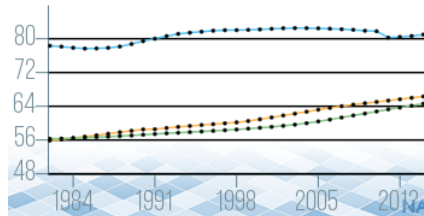


4. Support for BiDi-Textrendering



New Controls:

## 5. Chart



## 6. Calendar



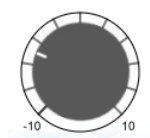
## 7. Clock



## 8. Circular-Slider



## 9. Knob



## 10. Segment-Bar



## 11. Range-Slider

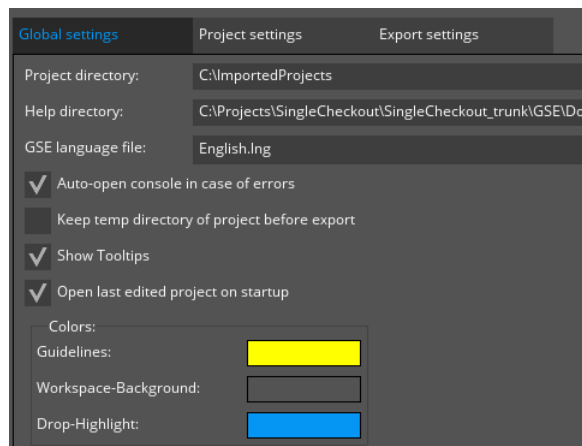


### New Behaviours:

## 12. Auto-Repeat

Repeat actions with defined interval and multiple stages

## 13. TabSwitch



## New Commands:

### **14. CallAPI**

Previously CallApplicationAPICmd

### **15. Delay**

Execute additional Commands after specified time

### **16. SetObjectVisuals**

Manipulate Position/Size/Alpha of objects

### **17. StartAnimationChain**

Start specified animation-chain

### **18. StopAnimationChain**

Stop specified animation-chain

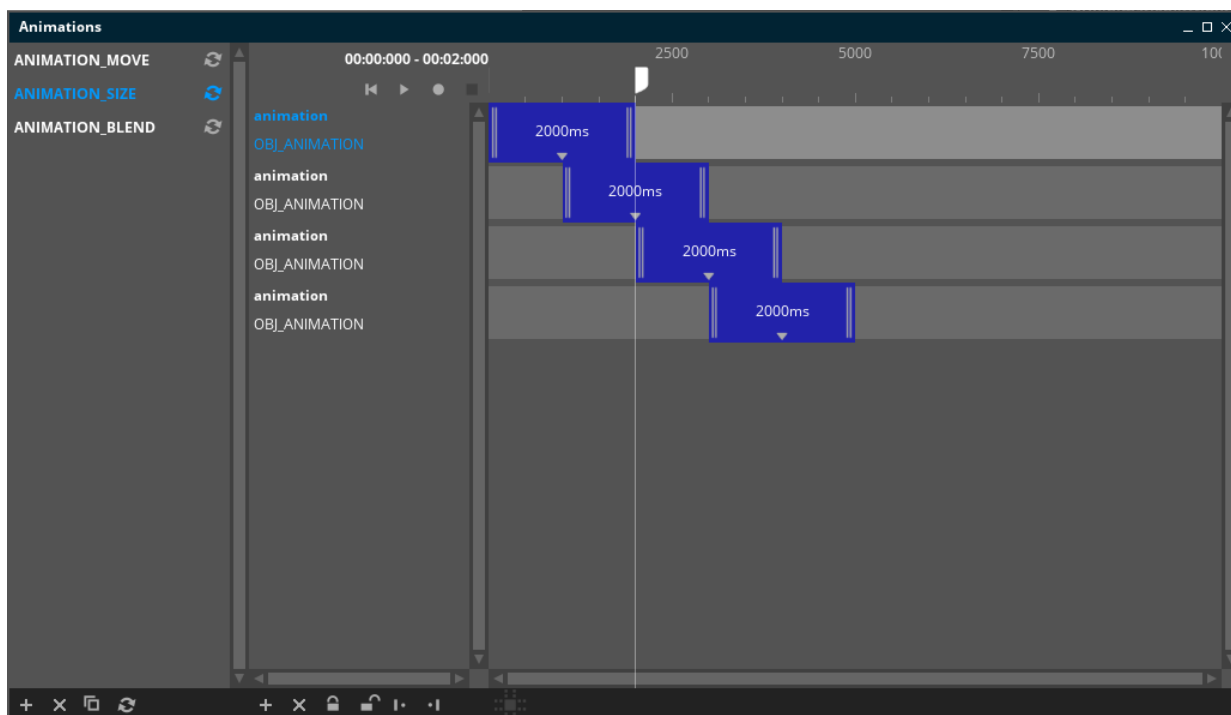
### **19. SwitchResourceSets**

Switch resource-sets, e.g. Images, Fonts, etc.

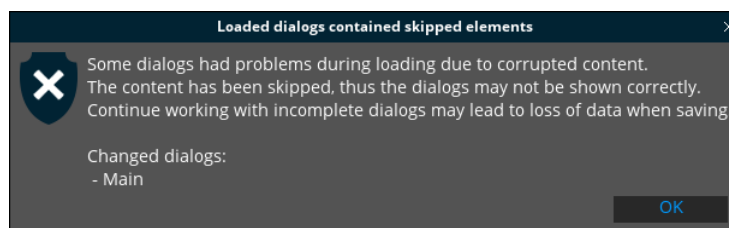
GSE:

## 20. New Animation-Editor

Easily create complex animations featuring real time-preview

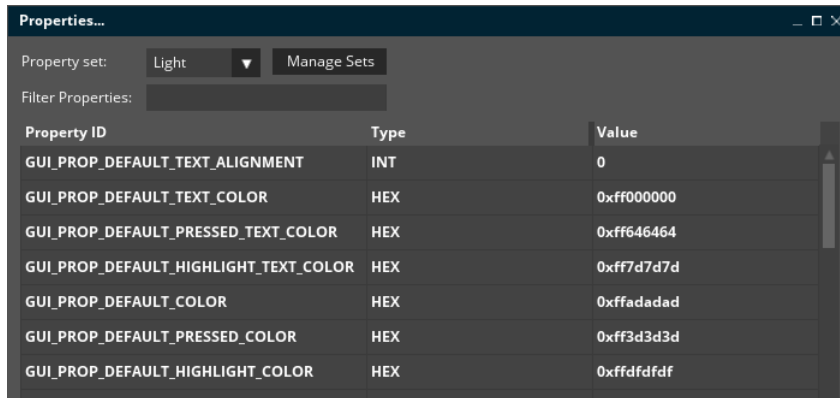


## 21. Skip corrupted data in dialogs on load



## 22. Properties can be used for Colors

Set colors of objects via properties which can be dynamically switched



## 23. Improved CustomExtensions-Management

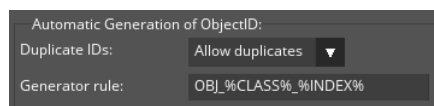
CustomExtensions are now easier to add or remove

## 24. Manage Resources including Filtering for filename

Additionally to ResourceID filenames are also searched for

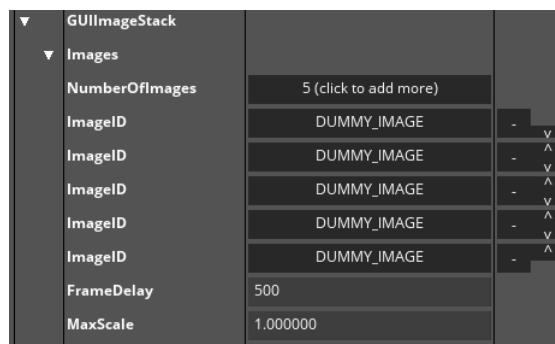
## 25. Generation of ObjectIDs now rulebased

Prevent duplicate object-ids by using auto-generation rules



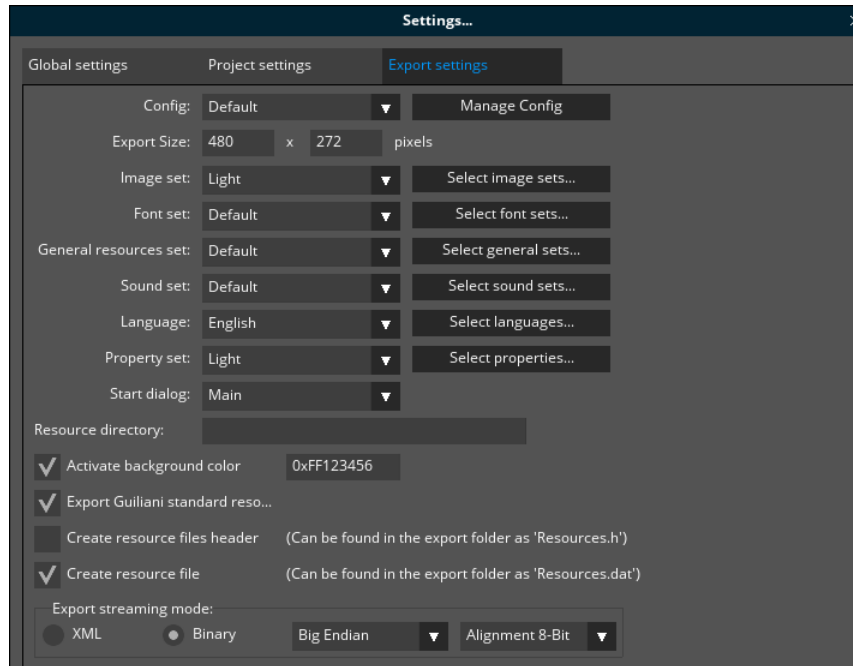
## 26. Reordering of repeating entries

Repeating entries (e.g. images for ImageStack) can easily be re-ordered



## 27. Manage multiple Export-Configuration per project

Specify different export-settings and group them into an Export-Configuration



## 28. Configuration of DataPool

Now initial values for both dimensions of a DataPool-object can be configured

